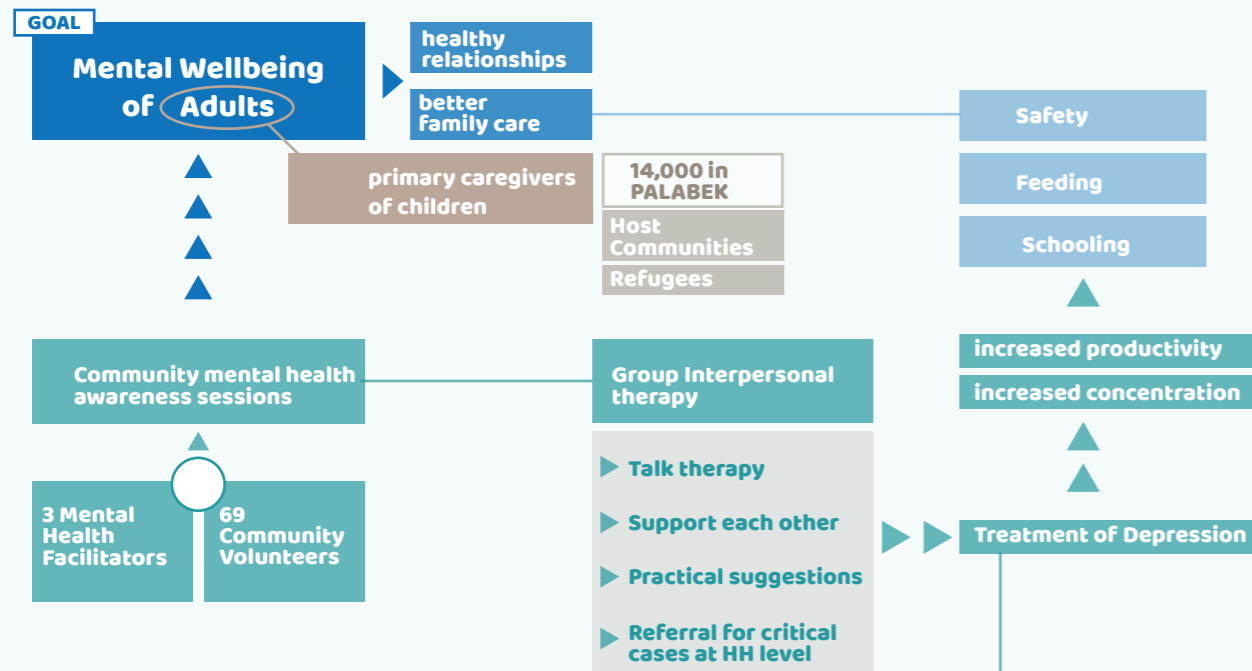


Parental Wellbeing: a pivot for Child Protection



TARGET 14,000 people in Palabek

50% Host Communities | 50% Refugees

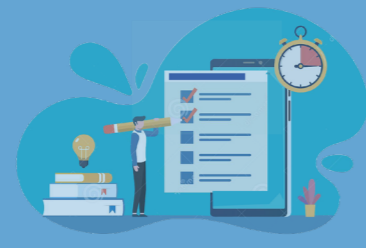
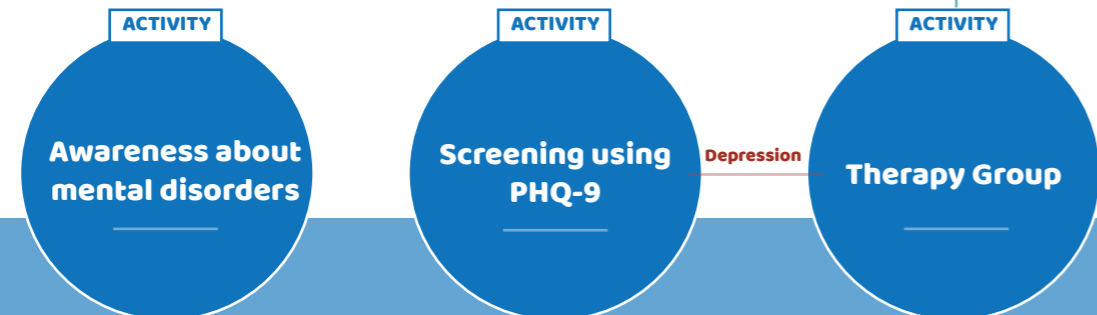
Palabek is in Northern Uganda

Palabek is home to 55,000 refugees from South Sudan and Congo

Households within Palabek present with poverty, GBV, family conflicts, trauma

* Adversity > Mental Illness
poverty anxiety, depression

CHILD PROTECTION



CHALLENGE

Clients who present with suicidal ideation are often challenging to work.

CHALLENGE

Clients who present with suicidal ideation require a stronger referral and linkage pathway that sometimes is weak.

CHALLENGE

Absence of and inadequate opportunities that are critical for the other needs of clients deters client's healing progress.



IMPROVED

Feeding patterns
Health care
Access to critical services

Psychotherapy like protection is best **blended with livelihoods** interventions.

85% of parents who accessed the talk therapy are **better caregivers** providing care and holistic needs to the children.



Mental health may not be considered a main stream sector in child protection, it does indirectly **offer protection and care for children.**